

7 AFFORDABLE AND CLEAN ENERGY



**Elevate Efficiency
in Clean Energy
Management for
Sustainable Development**

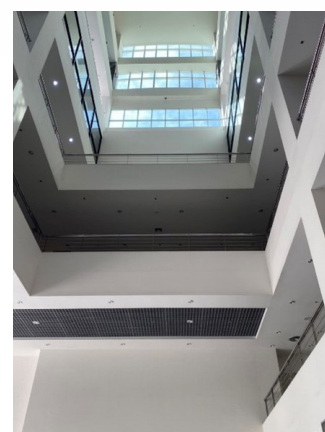
NIDA realizes the importance of managing and developing clean and affordable energy. This is communicated to all to create common understanding in saving energy, fostering cooperation, and facilitating research on affordable and clean energy, all of which help elevate efficiency in the management of clean energy for sustainable development.

Energy-Efficient Building

NIDA purposely designs the buildings in ways that create natural ventilation and natural lighting covering most of the building space. As such, artificial light is rarely needed during daytime.



Natural light and ventilation



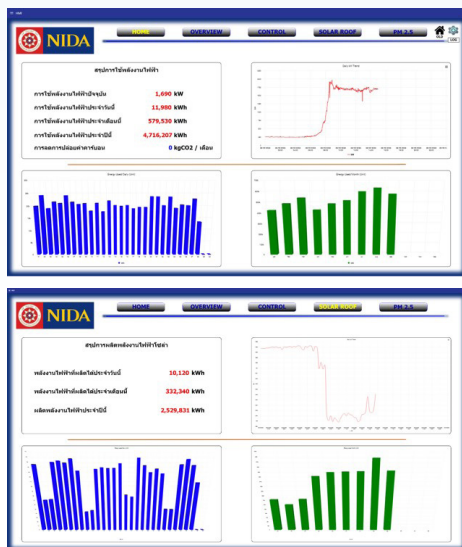
Upgrade Buildings to Higher Energy Efficiency

To increase energy efficiency in every building on campus, the traditional fluorescent lightbulbs were replaced by LED lightbulbs, which requires lower energy usage and reduces the energy needed by the air-conditioning system. In addition, the air-conditioners were replaced with the split-type inverter air-conditioner which is more energy efficient. Furthermore, the variable speed drive (VSD) has been installed to increase efficiency, as well as the use of the building energy management system and the solar panels on the roof of Navamindrathiraj Building. These result in the circular energy ratio of 1.06%.



Solar panels on the roof of Navamindrathiraj Building

Carbon Reduction and Emission Reduction



On NIDA’s campus, the use of Electric Vehicle (EV) is encouraged, which aims at reducing global warming with zero emission technology. The Institute also provides four EV charging stations “EA Anywhere” on campus to facilitate the use of alternative energy since this is part of the efforts in reducing the use of fossil fuel, the accumulation of greenhouse gas, and air pollution.

EV Charging Stations



Electric Vehicles



The School of Environmental Development Administration at NIDA offers a number of environmental management programs in master and doctorate levels. Under this school, the Center for Environment and Climate Change Research conducts research on clean energy and the impact of energy production and utilization, as well as the use of alternative energy. The studies have produced many benefits for the communities and society, such as Empowering Sustainable Energy Communities in Thailand: Unveiling the Knowledge Transfer Process, Innovative Characteristic Assessment of Air Pollution in Bangkok.

Related Academic Services

NIDA realizes the significance of SDG 6 and in accomplishing the goal, its faculty who are the subject experts have stepped up to educate the public and disseminate information through NIDA Digest, which is published on the Institute’s website such as BCG Sufficiency Economy Series EP15 “Floating Hybrid Solar Farm” in Sirinthorn District in Ubon Ratchatani Province by Dr. Preeyanuch Thammapiya.